

# LINDSEY NIGHTSTAND

Two doors, separated with a perfectly proportioned open shelf, allows you to show what you want and apply space to tuck away other items. Now available in a larger size!

**MATERIAL**

Veneer\*

**DIMENSIONS**

- A. 18"L x 18"W x 22"H
- B. 18"L x 18"W x 28"H
- C. 24"L x 18"W x 28"H
- D. 30"L x 18"W x 22"H
- E. 30"L x 18"W x 28"H

**NUMBER OF DRAWERS**

2

**FREE FLOATING**

Yes

**WEIGHT**

- A. Call for Weight
- B. 54 lbs
- C. 74 lbs
- D. Call for Weight
- E. 87 lbs

*This item is handcrafted and may show slight variation in size from one piece to another.*

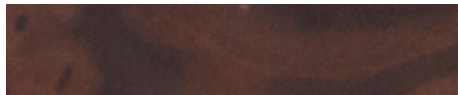
*\*Natural variations in this material may occur.*



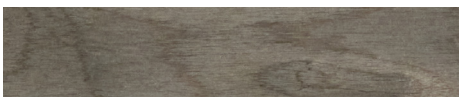
**FINISHES**



Olive Ash



Walnut



Gray Burl

