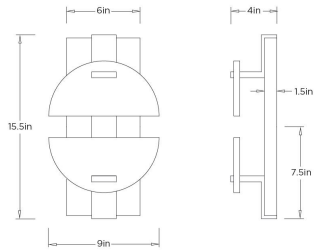


# ARTERIOS

## LOGAN SCONCE



DWC88 LOGAN SCONCE

ARTERIOS



DWC88  
Seedy Slump, Glass

Drawing inspiration from the phases of the moon this unique sconce features stacked semi-circles of seeded slump glass that are clasped to a stepped backplate of English bronze-plated iron. Geometric layering allows the light to radiate from the wall. Certified for damp locations and intended for interior use. Finish will vary.

### APPEARANCE

Materials	Glass, Iron
Finishes	Seedy Slump, English Bronze
Finish Will Vary	Yes
Top Coat/Sealant	Yes

### DIMENSIONS

Overall	W: 9 in x D: 4 in x H: 15.5 in
Backplate	W: 6 in x D: 1 in x H: 14.5 in
Center of Mount from Bottom	H: 7.5 in
Mount	W: 5.5 in x H: 5.5 in

### WIRING

Wire Rating	Damp
Cord	0.5 FT, Black/White, SVT
Socket	2, Integrated LED
Maximum Wattage	8.0
Voltage	110-120 V
LED Color Temperature	2700K
LED Compatible Dimmer	Non-Dimmable
LED CRI	90+
LED Lifespan (Hours)	30,000

### CERTIFICATIONS & COMPLIANCY

Certifications	Mexico, United States, Canada
Compliance	RoHS, UL/ETL

### SHIPPING

Product Weight	8.2 lbs
Gross Weight 1	16.2 lbs
Shipping Box 1	W: 12.0 in x D: 18.0 in x H: 9.0 in

### CONTRACT

Contract Suitability	Contract Suitable As Is
----------------------	-------------------------

### REPLACEMENT PARTS

DS12W12