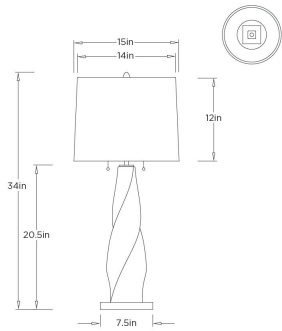


SCYLLA TABLE LAMP

Barry Dixon



GDPTI03-711 SCYLLA TABLE LAMP

A R T E R I O R S



GDPTI03-711  
Amber Luster, Glass

A dynamic twist defines this lamp's sculptural form, giving it a sense of movement and architectural presence. Crafted in amber luster glass, the body captures and refracts light with rich depth and variation. Dual pull-chain sockets offer practical control without distracting from the fluid silhouette. Designed to pair with coordinating ceramic accessories, the lamp shares the same rotational inspiration, creating a cohesive statement on side tables, consoles, or bedside.

APPEARANCE

Materials	Glass, Iron, Microfiber, Cotton
Finishes	Amber Luster, Antique Brass, Off-White, Off-White
Harp Finish	Antique Brass
Finish Will Vary	Yes
Top Coat/Sealant	No

DIMENSIONS

Overall	Dia: 15 in x H: 34 in
Foot Print	Dia: 7.5 in
Base	Dia: 7.5 in x H: 1 in
Body	W: 5 in x D: 5 in x H: 20.5 in
Finial	Dia: 1.75 in x H: 1.5 in
Shade Top	Dia: 14 in
Shade Side	H: 12 in
Shade Bottom	Dia: 15 in
Neck	Dia: 0.5 in x H: 6 in

WIRING

Wire Rating	Indoor Only
Cord	10 FT, Beige Cloth Cord, SPT-2
Socket	2, Type A - E26
Suggested Bulb Type	A19
Photographed Bulb	Classic Standard Bulb
Switch	At Socket, On/Off Pull Chain
Maximum Wattage	100
Voltage	110-120 V

CERTIFICATIONS & COMPLIANCY

Certifications	Middle East, European Union, United Kingdom, Mexico, United States, Canada
Compliance	UL/ETL, CB

SHIPPING

Product Weight	8 lbs
Gross Weight 1	14 lbs
Shipping Box 1	W: 12 in x D: 12 in x H: 33.25 in
Shipping Box 2	W: 16 in x D: 16 in x H: 13 in

CONTRACT

Contract Suitability	Contract Suitable With Conditions
Contract Conditions	Does Not Pass 12 Degree Tilt Test
Tilt Test Degrees	10 Degrees

REPLACEMENT PARTS

GDPTI02FIN