

TRENT

In a pommel horse style, our Trent bench is elevated in a patchwork of warm light gray hair-on-hide. The minimal cylindrical legs are crafted from steel in a bronze finish.

MATERIAL

Hair-On-Hide/Steel

DIMENSIONS

A. 24"W x 16"D x 18"H

B. 50"W x 16"D x 18"H

C. 64"W x 16"D x 18"H

Seat Height: 18"

Seat Depth: 16"

WEIGHT

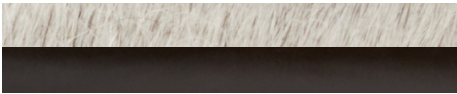
A. 17.64 lbs

B. 34 lbs

C. 55.12 lbs



FINISHES/MATERIAL



Gray/Bronze

