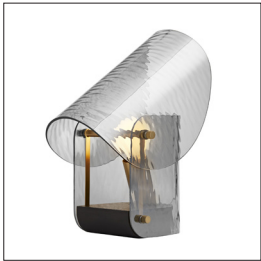
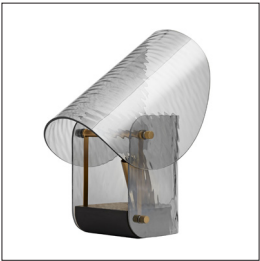
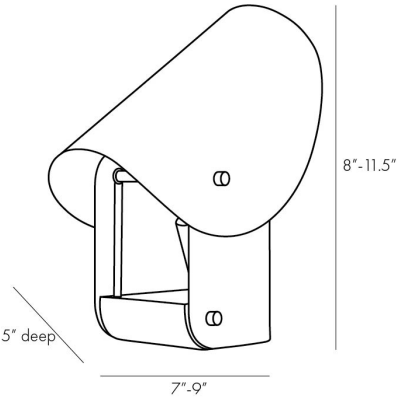


# ARTERIOS

## BEND ACCENT LAMP

WORKSHOP



DA49009  
H: 8-11.5 IN, W: 7-9 IN, D: 5 IN  
Blackened Steel, Smoke Luster Glass  
Contract Suitable As Is

Composed of two curved, textured smoke glass forms layered to create a unique visual effect, the Bend Accent lamp makes a big statement despite its petite size. The lamp's shade can be adjusted to tilt in either direction, directing its delicately patterned light wherever the user chooses. A must-have for side tables and desks in silvery grey Smoke glass and antique brass.

### APPEARANCE

Material	Glass, Steel, Wood
Finish	Antique Brass, Ebony, Smoke
Top Coat/Sealant	false

### WIRING

Rating	Indoor Only
Tilt Test	10 Degrees - AU
Cord	8 FT, Black Cloth, SPT-2
Socket	1, Black, Type B - E12
Switch	On Line, On/Off Rocker
Photographed Bulb	Frosted Globe Bulb
Maximum Watt	60
Voltage	110-120 V

### CERTIFICATIONS

Cerifications	Mexico Australia, United States, Canada
---------------	--

### COMPLIANCY

UL/ETL	Yes
RoHS	true

### SHIPPING

Product Weight	4.8 LBS
Gross Weight 1	6.4 LBS
Shipping Box 1	H: 8 IN, L: 8 IN, W: 27 IN

### CONTRACT

Contract Suitable	true
-------------------	------