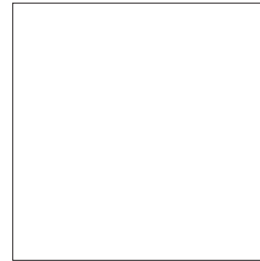
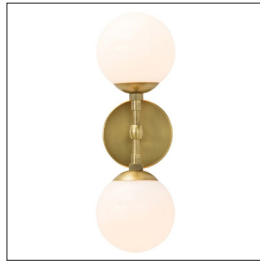
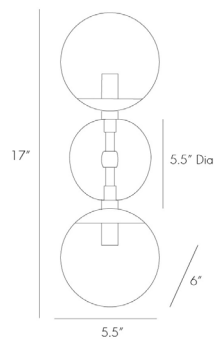


ARTERIOS

POLARIS SCONCE



49961
H: 17 IN, W: 5.5 IN, D: 6 IN
Antique Brass
Contract Suitable As Is

A perfect balance of proportions, this double sconce sets frosted glass globes against antique brass arms and back plate. It's a sophisticated element for modern settings and can be horizontally or vertically mounted. Damp-rated, although limited covered outdoor conditions may affect finish.

APPEARANCE

Material	Glass, Steel
Material Type	Plated
Finish	Antique Brass, White
Top Coat/Sealant	true

DIMENSIONS

Center Of Mount From Btm	8 IN
Arm	H: 8 IN, W: .75 IN, D: 3 IN
Backplate	Dia: 5.50 IN
Mount	Dia: 5.00 IN

WIRING

Rating	Damp
Cord	1 FT, Black, SVT
Socket	2, Type B=-E12 Other
Maximum Watt	25
Voltage	110-120 V

CERTIFICATIONS

Certifications	Mexico Australia, EU, United Kingdom, Middle East, United States, Canada
----------------	---

COMPLIANCY

UL/ETL	Yes
CB	Yes
RoHS	true

SHIPPING

Product Weight	2.5 LBS
Gross Weight 1	6 LBS
Shipping Box 1	H: 19 IN, L: 10 IN, W: 10 IN

ADDITIONAL INFO

Features	Assembly Required
----------	-------------------

CONTRACT

Contract Suitable	true
-------------------	------