

## **BENSON ROUND AND OVAL**

Elegance meets industrial. The Benson features two antiqued-mirror panels, one large and one small, with a dusting of gold that creates the moody effect of this large, round piece. A slim, flush frame is the finishing touch, complementing the piece's simplicity.

### **MATERIAL**

Mirror

### **DIMENSIONS**

A. 32"D

B. 38"D

C. 44"D

Depth: 1.25"

### **REFLECTION AREA**

A. 31"D

B. 37.5"D

C. 43.5"D

### **TYPE OF HARDWARE**

D Ring

*Our mirrors are designed to be hung by a professional, usually by wire. Actual hanging specifics vary on a case by case basis and depend on several variables, including the mirror weight and wall type. Incorrect hanging can result in damage to the mirror or the wall. Made Goods is not responsible for damage due to incorrect hanging of our pieces.*

### **HANGING ORIENTATION**

Landscape/Portrait

### **WEIGHT**

A. 35 lbs

B. 40 lbs

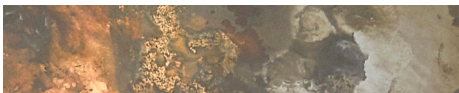
C. 66 lbs

### **MIRROR TYPE**

Beveled



### **FINISH**



Smoked Gold Antique

