

ISLA NIGHTSTAND

A tightly wrapped, natural peeled rattan frame complements the dense basket weave of the natural, peeled rattan top, side, and double shelves. The soft-close drawer is finished with a wood interior and flower-patterned gold knob.

MATERIAL
Peeled Rattan

DIMENSIONS
A. 18"L x 18"W x 30"H
B. 24"L x 18"W x 30"H
C. 30"L x 18"W x 30"H

LEG CLEARANCE
3"

CLOSING MECHANISM
Soft-Close

INTERIOR
2 Shelves
A. 13"L x 13.25"W x 2.75"H
B. 25"L x 13.25"W x 2.75"H
Shelf Clearance: 9"
Knobs: A,B,1 C. 2
3 Compartments

DOOR THICKNESS
1"

WEIGHT
A. 30 lbs
B. 44 lbs
B. 44 lbs



FINISHES



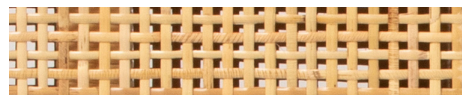
French Gray



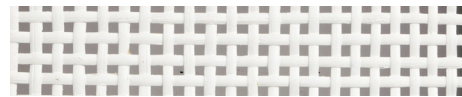
Smoke



Onyx



Natural



White

