



KALINDA

Our sunburst Kalinda wall sconce beams diffused rays of light. This sculptural piece features delicate rods of iron, hand-fused into layers that create depth.

MATERIAL

Iron

DIMENSIONS

Overall: 20"W x 6"D x 20"H

Lamp: 20"W x 6"D x 20"H

SWITCH TYPE

1-Way

NUMBER OF BULBS

2

BULB TYPE

Type B, 40

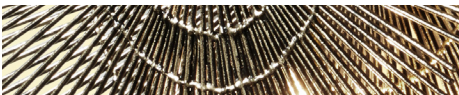
UL/CUL CERTIFIED

Yes

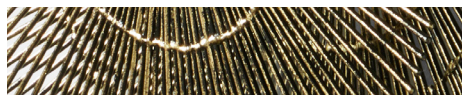
WEIGHTS

7.4 lbs

FINISHES



Antiqued Nickel



Antiqued Brass

